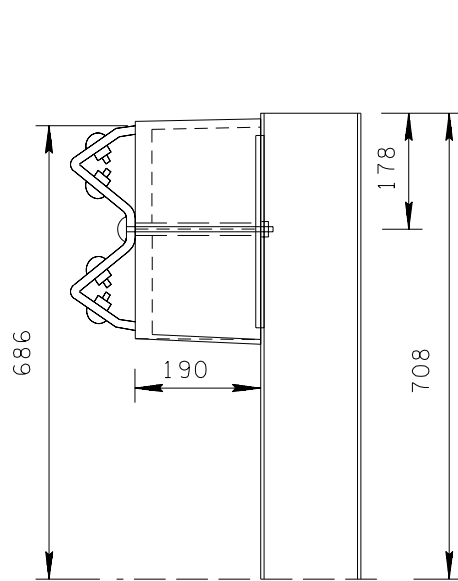
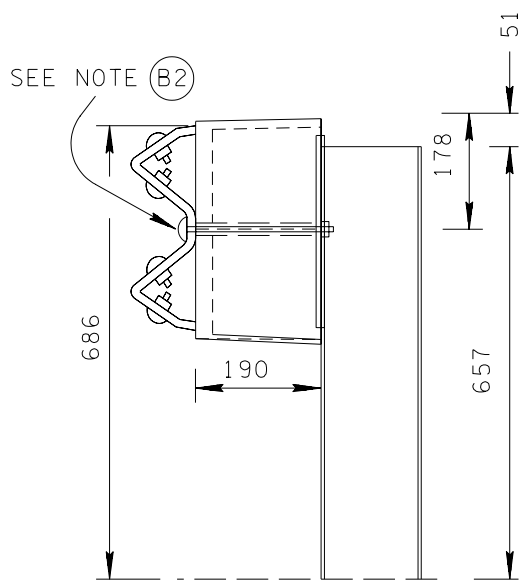


DETAILS SHOWING HOLES REQUIRED IN POSTS AND BLOCK-OUTS

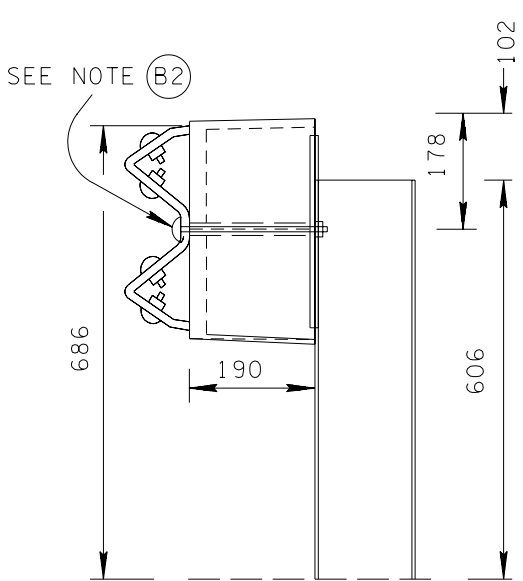
(FOR USE IN FUTURE RAIL ADJUSTMENT)



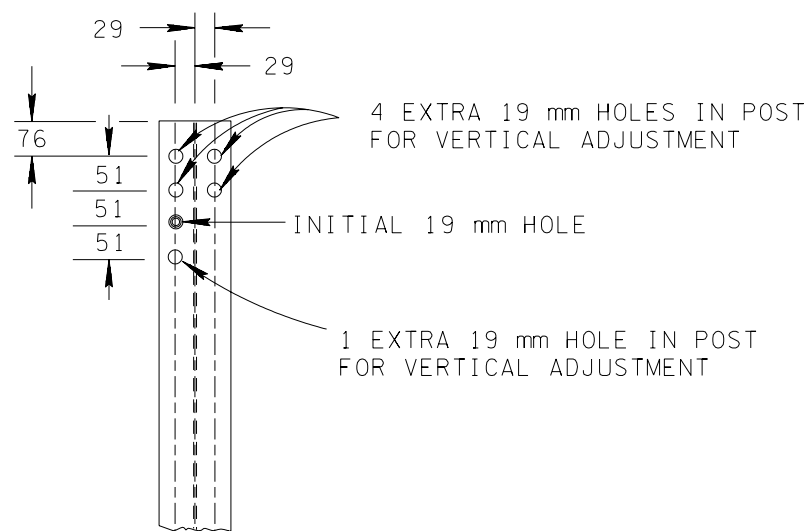
INITIAL INSTALLATION



FIRST ADJUSTMENT



SECOND ADJUSTMENT



FRONT ELEVATION
STEEL POST

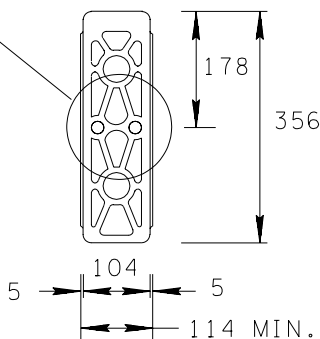
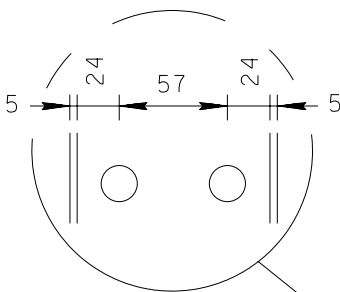
ADJUSTABLE STEEL POSTS AND BLOCK-OUTS AT VARIOUS ADJUSTMENTS

INSTALLATION NOTES FOR BLOCK-OUTS WITH HORIZONTAL ADJUSTMENT HOLES

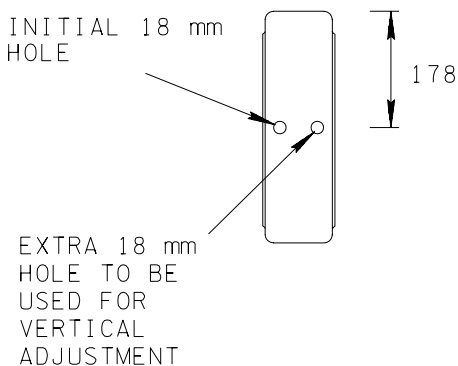
- (B1) THE INITIAL INSTALLATION WILL REQUIRE ONE M16 X 241 mm LONG BUTTON HEAD BOLT WITH ROUND STEEL WASHER.
- (B2) THE FIRST ADJUSTMENT AND THE SECOND ADJUSTMENT WILL REQUIRE TWO M16 X 241 mm LONG BUTTON HEAD BOLTS. EACH BOLT WILL REQUIRE ONE ROUND STEEL WASHER.

GENERAL NOTES

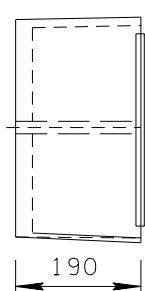
- (A) SEE STANDARD DRAWING SM-GR-12 FOR ADDITIONAL POST DETAILS AND SPECIFICATIONS.
- (B) SEE STANDARD DRAWING SM-GR-14 FOR ADDITIONAL BOLT, WASHER AND NUT DETAILS AND SPECIFICATIONS.
- (C) SEE STANDARD DRAWING SM-GR-13 FOR BLOCK-OUTS WITH VERTICAL ADJUSTMENT HOLES AND MOUNTING DETAILS. THE METAL POST SHOWN ON THIS SHEET MAY BE USED WITH WOOD BLOCK-OUTS.
- (D) RECYCLED PLASTIC GUARDRAIL BLOCKOUTS LISTED ON THE TENNESSEE DEPARTMENT OF TRANSPORTATION'S QUALIFIED PRODUCTS LIST MAY BE SUBSTITUTED FOR WOOD BLOCKOUTS. THE USE OF RECYCLED PLASTIC GUARDRAIL BLOCKOUTS ARE SUBJECT TO THE FOLLOWING STIPULATIONS:
- (1) THE MIXING OF BLOCKOUTS ON A GIVEN PROJECT WILL BE AVOIDED IF POSSIBLE.
- (2) SHOULD IT BECOME NECESSARY TO CHANGE THE BLOCKOUT TYPE ON A GIVEN PROJECT, THE BLOCKOUTS SHOULD NOT BE MIXED ON A GIVEN RUN OF GUARDRAIL.
- (3) BLOCKOUTS SHALL MEET NCHRP-350 GUIDELINES.



BACK VIEW



FRONT VIEW



SIDE VIEW

PLASTIC BLOCK-OUT DETAIL FOR STEEL POST



ALL UNITS ARE IN MILLIMETERS
UNLESS NOTED OTHERWISE.

☒ MINOR REVISION -- FHWA
APPROVAL NOT REQUIRED.

STATE OF TENNESSEE
DEPARTMENT OF TRANSPORTATION

BARRIER RAIL MOUNTING
POST FOR PLASTIC
BLOCK-OUTS
WITH HORIZONTAL
ADJUSTMENT HOLES

5-27-03

SM-GR-13A